

Mrs Mason's Messages Issue 13: Friday 10th May 2024



Dear Parents/Carers,

This week is an incredibly busy week in school due to the Year 6 SATs tests taking place. We have enjoyed welcoming our Year 6 pupils into school earlier than usual to take part in a 'SATs breakfast' - an informal opportunity to connect with their friends and teachers and calm any jitters! We have done this for the past three years and it is always such a lovely start to the day. We have been incredibly proud of the super attitudes that the children have been demonstrating throughout the last few weeks as we have been supporting the children in small groups to revise key aspects of learning. The children are a credit to all of us - parents, staff and themselves!

SATs tests are just a small part of children's experiences in school. There is much to be celebrated around the wider school community with some brilliant teaching and learning going on and much to look forward to. We have enjoyed taking part in the Linking Schools initiative with Iqra Academy with our Year 4 classes and Year 6 and Reception practised their biking skills with the Bike-a-bility and Balance-a-bility teams last week.

Please look out for an emailed questionnaire to complete this week as we start our journey towards achieving the Wellbeing Award for Schools. This provides us with an opportunity to evaluate our current practice and identify areas for further development next year and we need your help via completing our parental questionnaire!

Fingers crossed for a sunny end to half term and a well-deserved break!

Mrs Mason

Parental Feedback



Continuing our feedback to parents from the parental questionnaire conducted in Spring term, this newsletter we are focusing on **safety**.

2. My child feels safe at this school

[More Details](#) [Insights](#)

Strongly agree	105
Agree	49
Neither agree or disagree	1
Disagree	0
Strongly disagree	0



99.3% of parents/carers report that their **child feels safe** with the majority of parents/carers reporting this as . This is an improvement to our 2023 survey where 88% of parents/carers strongly agreeing with this statement.

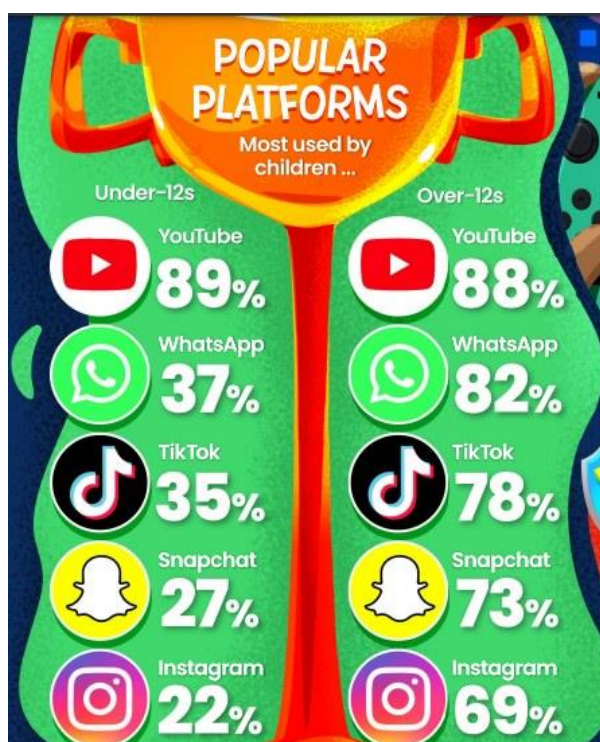
Safety is of paramount importance to us in school and in this newsletter we will focus on a few areas of current focus.

In the Spotlight - Online Safety



Previously, we have released a separate Online Safety newsletter. However, this has not been as well read as our newsletter so instead there will be a regular slot on each newsletter regarding Online Safety.

Each year Ofcom, the UK's regulatory body for communications, produces a report into the media use and attitudes of children and parents' experiences over the previous year. An overview of this report is attached to this newsletter.



In school, we see various issues begin to arise in pupil friendships around the time children start having access to their own phones. This is particularly seen when children are joining whatsapp

groups and communicating with each other over whatsapp or similar online chat functions outside of school. Where we are aware of issues arising in the use of particular sites, we run bespoke sessions in school for year groups or classes to address this and communicate with parents and carers to advise them of the action taken in school.

As parents and carers, we urge you to monitor children's usage of such sites. Age rating for these sites are above the ages of our pupils, however lots of our children are accessing these. Should you be aware of any concerns arising from your own child's usage or that of others, please do address this at home but also make us in school aware so that we can support through the e-safety curriculum.

In our parental survey, **93%** reporting their child had access to a **good range of subjects**, an increase since 2023 from 75%. Our approach to teaching Online Safety is a good example of our bespoke approach - whilst we follow the National Curriculum to provide a broad and balanced curriculum offer, where there is a need to personalise this for pupils, classes or year groups this takes place to meet the needs of our pupils.

13. There is a good range of subjects available to my child at this school.

[More Details](#) [Insights](#)

Strongly agree	68
Agree	75
Neither agree or disagree	9
Disagree	3
Strongly disagree	0



Safety - Parking Policy

Continuing the theme of safety, governors have approved a new **parking policy**, attached to this email and also available via the school website.

This policy has been produced to help ensure the safety of all visitors, parents, children, and staff at Idle C of E Primary School and we are grateful for your full cooperation. This document forms part of the risk assessment for the safety of everyone entering or leaving the school site. Parents and carers are reminded that they are responsible for their children in the car park and they should be closely supervised at all times.

We have been really encouraged by the positive response to the **WOW initiative!** We encourage pupils to travel actively to and from school each day – this includes walking to school, park and striding (parking your car ten minutes away and walking the remainder of the journey) or to come by bike or scooter. We urge you to encourage this wherever possible to minimise parking problems but more importantly to protect the environment for your children and future generations.

Pedestrians entering our site must use the allocated pedestrian gates and when walking through the site should utilise the zebra crossings and follow the painted pedestrian walk ways, where these are in place. Pedestrians are to keep to the pathway and not walk across the car park area for their own safety.

Children are permitted to ride bicycles and scooters to school (providing appropriate safety gear such as helmets are worn) and to use the bike shed or scooter park for storage during the school day. Pupils must dismount from their bicycles and scooters when entering the school site and must keep

to the pathways. **They are not to cross the car park or use the roads within the school site riding a bike or scooter.**

For those parents who choose to come to the school by car, we politely request that you **do not to enter the school car park when dropping off children going to school unless you have prior agreement** (see below). For safety reasons it is the school's Governing Body Policy not to have children walking amongst moving vehicles. These measures are for the safety of all those who attend our school.

Vehicles must not enter the school car park between the hours of 8.30am and 9am or between 3.15pm and 3.45pm, whilst pupils are entering or exiting school or engaged in a before or after school clubs.

Parents/Carers who are **blue badge holders**, or families where a child is a blue badge holder, are permitted to access the car park by prior arrangement. This is to ensure that our team can monitor access and provide any necessary support. We ask that you are mindful of our 5 mile an hour speed limit and pay additional care and attention when driving and parking due to the high volumes of pedestrians at peak times.

We do understand that there are some exceptional circumstances for our families that may mean that access is required for a short period of time. For example, it may be that a child or parent/carer is suffering from an illness, an injury or are in recovery after surgery and in these situations we are of course happy to help and support.

If any parent feels that they have an exceptional circumstance, they should discuss this with the Business Manager. Permission will be given at the Business Manager's discretion and may involve access to the car park and/or support to bring a child to the school building.

Any **permission relating to exceptional circumstances is given for a limited time only**. This will be reviewed on either a 2 or 4 week basis depending on the circumstances.

Our School Business Manager, Mrs Ackroyd, will be contacting any families with permission to use the school car park before half term to issue **permits** to be displayed in the windscreen of your car when entering school premises to park due to being a blue badge holder or due to exceptional circumstances.

Thank you for your cooperation in keeping our school grounds safe for pedestrians.

Sun Safety

As a reminder and follow up to the letter sent earlier on this week, please ensure that children are treated with suncream before they arrive at school each day (weather dependent of course!). Children are permitted to bring their own, named suncream to reapply themselves at lunchtimes also.

Children should be bringing a **filled** water bottle to school each morning. They will be encouraged to take these outside for PE lessons and to drink during the day. Please note, these need to be filled with water only.

Sunhats are ideal for sun protection. We have a small number of spare hats in school but not enough for all pupils so would politely request that parents send children to school with an appropriate hat to protect them from the sun whilst playing.

Attendance Update



Each newsletter we will be updating you with our school's current attendance figures. The government target for attendance is **96.2%** and our attendance has maintained this figure!

Should you wish to discuss your child's attendance, please contact our Attendance Lead Mrs Craven.

Diary Dates



Monday 20th May - Class

Tuesday 21st May - MTC check information evening for parents Y4 3.40pm

Tuesday 21st May - Y6 Brownlee Triathlon

Wednesday 22nd May - Reception picnic on the cricket field

Thursday 23rd May - Idle Showcase 5.30pm - **ticketed event - letters and tickets will be sent home tomorrow for children who are invited to perform, please indicate if your child is able to attend**

Friday 24th May - School closes for half term

Monday 3rd June - School opens for half term

Monday 3rd – Friday 14th June - Year 4 Multiplication Tables Check

Tuesday 4th June - Y1 Cannon Hall Farm

Wednesday 5th June - Y5 Buckden Residential drop in evening 3.40pm

Wednesday 5th – Friday 7th June - Y6 Bikeability level 2

Thursday 6th June - Y2 Bolton Abbey

Week beginning Monday 3rd June - Newsletter 14

Prayer



Dear God,

Thank you for the challenges that we face,

Help us to see them as opportunities to learn and grow,

Help us to persevere even when things are tough,

Amen

Contacts



enquiries@idle.bradford.sch.uk

attendance@idle.bradford.sch.uk

urgent@idle.bradford.sch.uk

01274 410111