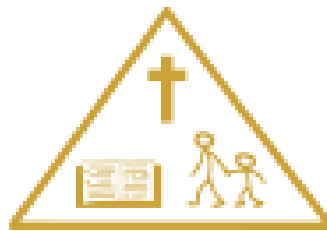


Idle CE Primary School



*Jesus' promise of "life in all its fullness"
(John 10.10)*

New Reception Parents' Handbook 2025 - 2026

Dear Parents/Carers,

I am delighted to be able to introduce you and your child to Idle CE Primary School. I hope you find the information in this pack useful in helping you and your child to settle in to your new school.

Our status as a church school is fundamental to who we are at Idle CE(A) Primary School. This is theologically rooted in our Christian Vision of Jesus' promise of "life in all its fullness" (John 10.10) for children, young people and adults within our school community to flourish. We are driven by our vision to nurture Christian hope and high expectations for all involved with education of the pupils in our care and to serve the common good.

As Headteacher, my aim, along with all the staff, is to provide the very best education for your children so they grow up to be very confident, happy and successful in all they do. We take great pride in our pupils' personal development and seek to provide an enriching, motivating environment which enables pupils to develop and flourish in their own unique ways.

We are a thriving, happy school which is always striving to improve and at Idle we know how important the first few years are to you and your child. We aim to make the transition into school as smooth as possible. There is a real sense of community here at Idle for all – pupils, parents and carers and staff. We are looking forward to getting to know you!

Should you have any questions, queries or concerns prior to starting school please do contact our friendly office team who will direct you to the best person to speak with.

Best wishes,

Mrs Anne Mason

Head Teacher



Helpful Information

Who will be my child's teachers?

We will have two classes: RB, led by Miss Booth and RT, led by Mrs Thornton and Mr Parker. However, we view Reception as one whole setting rather than two separate classes so your child will be interacting and building relationships with staff across the setting.



Miss Booth



Mrs Thornton



Mr Parker



Mrs Steane



Miss Wojtkow

School Times

Start of the Day

Reception children enter school through the two reception classroom doors. As you enter the car park turn left and walk around the school building and it is the first two classroom doors. Our doors currently open at 8:45 and close at 8:55. However, this is currently under review and any changes to the start of the day will be confirmed before September.

End of the Day

The school day ends at 3.25pm for Reception children. Parents are asked to wait for their children at the same door as the drop-off point. Children will be handed over to their responsible adult one at a time to ensure all children are kept safe during this transition time. Please be patient during the first few weeks of term as this could take some time whilst class teachers familiarise themselves with all the adults connected to the children in their class. If you are running more than 10 minutes late then your child/ren will need to be collected from the main school office.

Children must be brought and collected by a known adult; staff will not allow young children to be collected by older siblings under 14 years of age. Please let us know if someone different will be collecting your child at any time. If staff don't recognise an adult they will ask for the password. This is one of the school's safeguarding procedures.

Snack time

We offer milk to those who want it every day. Milk is provided by our supplier, Cool Milk. If you would like your child to have milk, please complete the form emailed by the office.

All children are to bring a named water bottle to school every day so they can have a drink of water whenever they feel thirsty.

Free fruit is available every day and children can eat it at any point of the day in Reception. Children are also allowed to bring a healthy snack (fruit or vegetable) from home if they wish.

On occasion as part of the curriculum we may try different foods related to the topics we are teaching. Therefore, it is essential that you **let us know if your child has any intolerances or allergies to any food or drink.**

Parents as Partners

From birth, children are continually learning. They develop and learn in a variety of ways and you as parents are their first and most enduring educators. Close working between teachers and parents is therefore vital for the identification of children's learning needs.



During the year we look forward to welcoming you into school for parent workshops and stay and play sessions.

Uniform

Please see the dedicated page of our school website for details of our uniform requirements and where to purchase them.

Due to the nature of the Early Years curriculum we often have access to the outdoor environment no matter what the weather. Therefore, all children need a pair of named wellington boots and waterproof all in one which should be kept in school in a labelled bag.

We ask that all children come into school with spare clothing (underwear/socks/skirt/trousers) in case of accidents. Spare clothing will be kept in a named bag on your child's peg.

Key Stage 1 Uniform list: (EYFS / Y1 & Y2)

Clothing & Footwear

Plain grey or black trousers, skirt, dress, or culottes.

Plain grey tailored shorts

Red and white Gingham pattern dresses, culottes or knee length pedal pushers (summer months).

White T shirt or polo shirt / white polo shirt embroidered with the school logo (*optional)

Red sweatshirts or sweat cardigans / red sweatshirt or sweat cardigan embroidered with the school logo (*optional)

Black, flat-soled shoes or all-black trainers

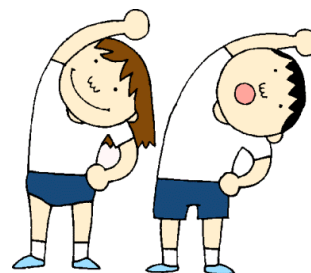
Plain, flat soled sandals with covered toes (summer months)

PE Kit to be worn to school on PE days:

- Plain white or school logo T shirt
- Plain black / navy shorts shorts of an appropriate length for comfort and appearance
- Plain black / navy blue track suits
- Hair ties for children with long hair
- Indoor pumps with non-marking soles to be kept in school
- Trainers which pupils can put on and take off independently

P.E.

Reception pupils take part in P.E once a week. Your child's PE day will be confirmed in September. On your child's P.E days, they will come to school dressed in their P.E kit and wearing trainers, which should be dark-coloured if possible. Please could we ask that these trainers have Velcro fastening (laces are tricky for younger children). The P.E. kit consists of black shorts and a plain white T-shirt. T-shirts with the school branding on are available to purchase. In colder weather, the children may wear plain, dark-coloured tracksuits.



Belongings

Please check that all your child's belongings have their name on, particularly jumpers and cardigans. We encourage children to look after their own belongings and hang their jumpers/cardigans on their peg when not in use – but inevitably belongings get mixed up. Named uniform items help us to quickly return the correct items to the child/parent.

Meetings

During the year, if you wish to see the class teacher about anything, it is best to do so after school. We are keen that any issues are dealt with quickly so that your child continues to feel happy and secure in school. Mr Parker, our Assistant Headteacher will also be happy to see parents. It will be necessary to make an appointment. However, it is usually best to speak to your child's class teacher first as they work closely with the children every day.

There will be a Parents Evening in the Autumn and Spring terms to discuss your child's progress and parents receive termly reports on their child's progress and attainment.

How Will My Child Learn?



At Idle Primary School, we believe that learning for your child should be a rewarding and enjoyable experience in which they explore, investigate, discover, create, practice, rehearse, repeat, revise and consolidate their developing knowledge, skills, understanding and attitudes.

During Reception, your child will be given the opportunity to develop their learning through playing and talking with other children and interacting with practitioners. Children will learn through a combination of play-based activities which may be self-chosen or adult led, and more structured whole class or small group teaching.



Practitioners will support your child's learning through interacting, questioning, responding to questions, working with and observing children, assessing and reporting children's progress. This includes planning and creating the learning environment, organising time and use resources to support, enhance and extend children's learning.

We recognise that play is the most meaningful and appropriate way for young children to learn. Children learn through their play, particularly when supported by sensitive adults. Therefore, your child will be provided with a variety of practical experiences where they can actively learn in a meaningful, imaginative way. They will be encouraged to take risks, find things out for themselves and make mistakes without feeling like a failure.

The Foundation Stage curriculum is organised into seven areas of learning. All areas of learning and development are important and inter-connected. Three areas are particularly crucial for igniting your child's curiosity and enthusiasm for learning, and for building their capacity to learn, form relationships and thrive. These three areas, the prime areas, are:



- Communication and language;
- Physical development; and
- Personal, Social and Emotional development.

We will also support your child in four specific areas, through which the three prime areas are strengthened and applied. The specific areas are:

- Literacy;
- Mathematics;
- Understanding the World;
- Expressive Arts and Design.

Communication and language development involves giving your child opportunities to experience a rich language environment; to develop their confidence and skills in expressing themselves; and to speak and listen in a range of situations.

Physical development involves providing opportunities for your child to be active and interactive; and to develop their co-ordination, control (including pencil control), and movement. We endeavour to help them to understand the importance of physical activity, and to make healthy choices in relation to food.

Personal, social and emotional development involves helping your child to develop a positive sense of themselves, and others; to form positive relationships and develop respect for others; to develop social skills and learn how to manage their feelings; to understand appropriate behaviour in groups; and to have confidence in their own abilities.

Literacy development involves encouraging your child to link sounds and letters and to begin to read and write. Children are given access to a wide range of reading materials (books, poems, and other written materials) to ignite their interest. We foster a love of books and develop children's comprehension through daily stories.

Mathematics involves providing your child with opportunities to develop and improve their skills in counting, understanding and using numbers, including recognising and using number patterns and bonds.

Understanding the world involves guiding your child to make sense of their physical world and their community through opportunities to explore, observe and find out about people, places, and the environment. Children are introduced to life beyond their local community and also in the past. We explore the outdoors and Forest School environments, encouraging the children to use all of their senses.

Expressive arts and design involves enabling your child to explore and play with a wide range of media and materials, as well as providing opportunities and encouragement for sharing their thoughts, ideas and feelings through a variety of activities in art, music, movement, dance, role-play, and design and technology.



How Will I Know What Is Happening In School?

There will be a regular class newsletter which will inform you of upcoming events, news and your child's learning. All letters and event information will be available on the school website www.idleprimaryschool.co.uk. Here you will also be able to find your child's class page which will be updated regularly. Please also follow us on Facebook by searching [The Idle CE Primary School](#) or scanning the QR code. We also use Marvellous Me, Parent Pay and Arbor.



For safeguarding reasons, permission to have images of your child on the school website and Facebook page will need to be given.

What About Reading?



Your child will start bringing home reading books. We ask that you **read each book 4 times** to help support the development of reading and fluency. As children begin learning phonics, they will receive a phonetically decodable book that will include sounds your child has been taught. Alongside this, children are encouraged to take home book for pleasure. This will be a story book that you can read with or to your child.

In addition to this, we do a variety of other reading activities, including shared reading, story-telling and daily phonics activities. We aim to encourage a lifelong love of reading!

What About Phonics?

Phonics is a method of teaching children to read by linking sounds (phonemes) and the symbols that represent them (graphemes, or letter groups). At Idle, we follow the ELS scheme across Reception and Year 1. We will be holding a phonic workshop for all Reception parents in the Autumn term. Meanwhile, please do look at our website where you will find information about the teaching and delivery of Phonics here at Idle!



<https://www.idleprimaryschool.co.uk/phonics-1>

<https://essentiallettersandsounds.org/parents/>

How Is The Classroom Organised?



The indoor and outdoor areas are organised to give children plenty of space to move around, explore and play. Resources are well-organised and children will know where everything is and where everything goes – they will be expected to get equipment out themselves and put it away. Each item will be labelled with words and pictures. This helps adults spend more time extending children's understanding, developing language and thinking skills and enthusing the children in their love of learning.

Other Information

Equal opportunities are provided for all the children and adults in the school. The children are encouraged to be sensitive to the needs and feelings of others and to understand, value and respect all other cultures and beliefs as well as differences in race, gender, class, religion, ability and disability of those in the immediate and wider environment.

At Idle Primary School, practitioners plan for each child's individual requirements, including those who need additional support or have particular needs or disabilities. The focus is on removing barriers for children where these already exist and on preventing learning difficulties from developing.

Foundation stage practitioners have a key role in working with parents to identify learning needs and respond quickly to any area of particular difficulty, and to develop an effective strategy to meet these needs, including the use of individual support plans, so that later difficulties can be avoided. We encourage you to share any concerns you have in regards to your child's development so that we can work together to make the best provision for them.

Foundation Stage practitioners work closely with parents, the Headteacher and other members of the Senior Leadership Team (including Mr Parker and Mrs Russell) as well as other external agencies to provide the best learning opportunities for all children.

Concerns:

If you have a concern, please speak to a member of the Reception Team. If you feel that you need to make a complaint, please see the Headteacher or the School Office and they will provide you with a copy of the complaints procedure.

Picking your child up:

If you are late picking up a child for any reason, please contact the office as soon as possible so that we are aware and can reassure your child.

Emergencies:

We pride ourselves on keeping all of our children safe and secure – however, in an emergency, we will immediately contact you so please could you ensure we have the correct contact details in the office. We have a sickness policy, so if you are not sure whether to send your child in to school please contact the office and we can advise you on when children are no longer infectious or are clear to return to school.

Out of school club:

Ark breakfast and after school club - held daily at school 7:30am – school start and after school 3.30pm-6pm.

Contact – idleark@outlook.com

How can I help my child be school ready?

Literacy

- Read to them every day and talk about the stories you read.
- Sing songs and rhymes.
- Encourage them to recognise and write their own first name.
- Read stories relating to starting school.
- Your child will naturally copy you. Let them see you reading!

Develop self-help skills

- Make sure they can use the toilet and clean themselves independently afterwards.
- Encourage independence in dressing and undressing.
- Encourage them to tidy up when they have finished playing.
- Teach them to put on and fasten their coat independently.

Build their hand muscles

- Show them how to hold a pencil correctly.
- Allow them to use scissors and cut pictures out of magazines.
- Threading beads, using playdough, pouring water, drawing, colouring, squeezing pegs and using spray bottles.

Communicating

- Talk about shapes, sizes, colours, numbers and patterns during everyday activities.
- Talk to your child about things and focus their attention on what they are seeing and hearing.
- Respond to your child's questions and encourage them to ask their own.
- Play board games to encourage turn-taking and resilience.

We very much look forward to welcoming you to Idle CE Primary School.

If you have any queries, however small, just ask.

The Reception Team

